

BLDC Motor Controller For ebike

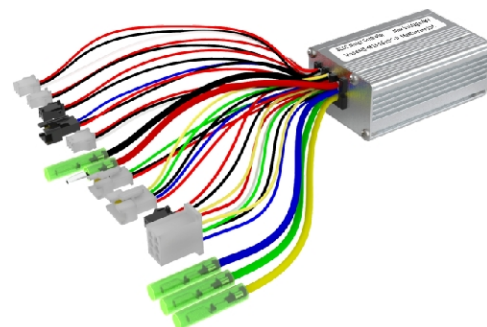


● Description

This is an ebike controller which can drive the wide range of BLDC motors with square wave mode or FOC mode, low power consumption design, smooth current flow technology, Auto motor position correct, auto real-time speed trace, it can drive the BLDC motor more smooth with low noise;

A special debug APP is available for some advance applications when customers want to make a special drive system by themselves; and customers only need to change settings by PC to match different brand BLDC motor different battery and different ride mode, different requirements and so on;

The controller shell is our patented design.

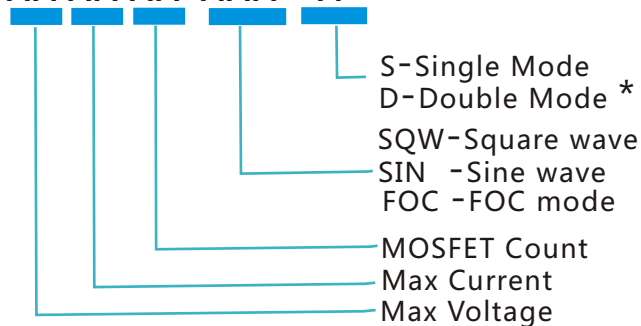


● Specification

Voltage : 24-72V
 Current: 10-50A
 Mode: Square /Sine wave / FOC
 Interface: Motor, PAS, Display, Brake Throttle, Torque sensor Light power, Gear Sensor etc
 Communication: UART /RS232/CAN
 Case Material: Aluminum
 Size: 86x30x54(mm)
 Net Weight: 225(g)
 Customization: Valiable

● Model Define

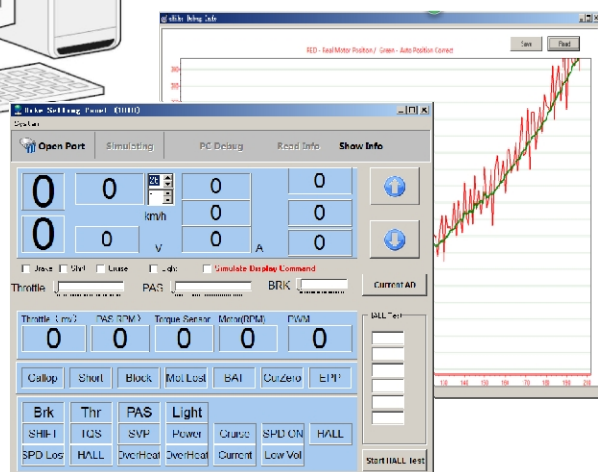
S-XX XX XX-XXX- X



*Notice: Double mode means auto identify hall or No hall motor or auto switch to No hall mode when motor Hall broken

● Debug APP

Debug APP can build a communication between PC with controller through an UART cable. Customers only need to change settings according to the BLDC motor type, battery type, and other features of accessories and download these settings to controller, then a complete new system will come out, APP also have a simulating function to drive the motor by PC.



● How to Order

Items below must be declared clearly before order.

- Motor Technology Parameters
- Batter Voltage & Max Current
- Interface & Cable length
- Other special requirements